



BIG LIFE
FOUNDATION

QUARTERLY REPORT
JULY - SEPTEMBER 2019



DIRECTOR'S NOTE

Dust. If I had one word for the third quarter, that would be it. It settles everywhere, inside the sealed car, and other places you'd rather not find it. But the dry conditions are more than an annoyance, when tensions run high. Lack of rains across the ecosystem (a normal occurrence during this period) means a lack of water, and these days that means a scarcity of food and resources for wildlife and people alike.

As a result, we saw some of the usual struggles we see in the dry season, when natural resources are scarce. An increase in bushmeat poaching incidents, a surge in snare confiscations, fires to be put out in grassland areas. Elephants continued to raid neighboring farms on a frequent, although decreasing, basis thanks to strategic protective fencing we've implemented.

But given all that, in an unexpected twist, we did not have a single elephant death in our area of operation this past quarter. That's very good news, as our crop-protection fence project extends and our ranger units continue to mitigate human-wildlife conflict across the ecosystem.

Our efforts to expand wildlife conservation programs to the north in Eselengei are on track, despite hitting a hurdle this quarter. The cultural shift, from one of conflict with lions to one of peaceful coexistence with lions, does not happen over night. And so we lost a lion in violation of our Predator Compensation Fund for the first time in a few years. We are increasing our efforts there, and the community seems prepared to adapt to and accept the new rules going forward. Time will tell. As the lion population continues to grow, so too will these pressures.

The rains have, blessedly, appeared to return. The Chyulu Hills around my home are rapidly shifting to become green and lush again. Dust is replaced with mud, and grasses rapidly recover ground. It's a relief as we enter the fourth quarter.

On a final note, our US team has been awarded the highest marks—a 4-star rating—by Charity Navigator, a trusted and respected organization which vets American charities. We hope you're proud, as we are, to support a nonprofit that has demonstrated transparency and effectiveness to such an impressive degree.

Thank you, as always, for your support.



*Richard Bonham,
Director of Operations, Big Life Kenya*

WHERE WE WORK

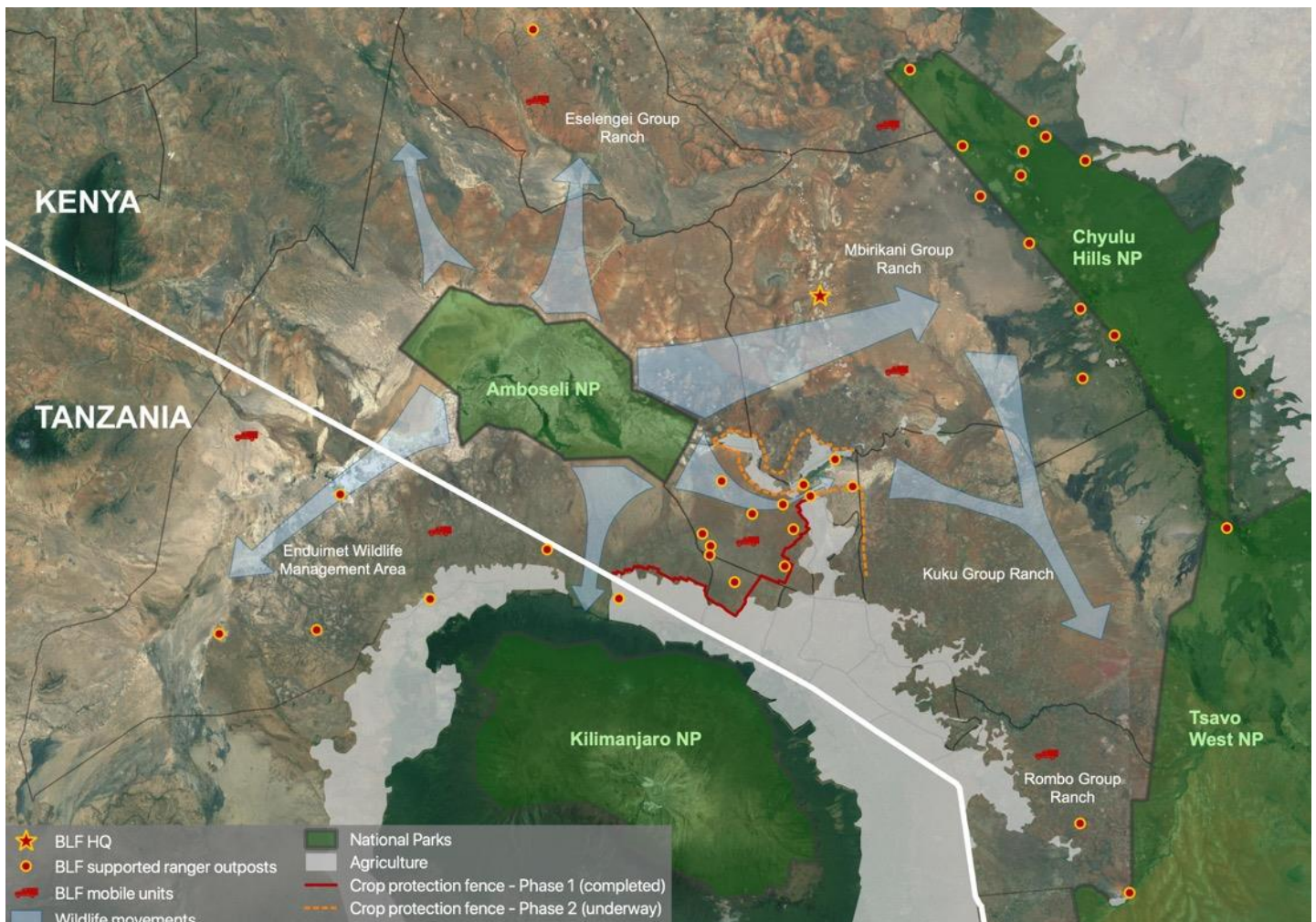
Big Life Foundation's (Big Life) Area of Operation (AOO) covers approximately 1.6 million acres across the Amboseli-Tsavo-Kilimanjaro (Greater Amboseli) ecosystem in East Africa. Our rangers help to protect and secure wildlife and critical habitat stretching from the rangelands north of Amboseli to the Chyulu Hills and Tsavo West National Parks in the east, and south to Kilimanjaro National Park. The area is a central connection point for migrating wildlife and contains some of the most important habitat left in Africa. Big Life was the first organization in the region to conduct collaborative cross-border patrols between Kenya and Tanzania.

Our AOO is divided into a core area with a permanent security presence and regularly patrolled by mobile units, a non-core area where mobile units respond based on need and are actively covered by our intelligence network, and adjacent areas where we provide support as needed. The level of Big Life support provided varies between outposts.

Core AOO: Eselengei Group Ranch, Kimana Area, Mbirikani Group Ranch, Rombo Group Ranch, Chyulu Hills National Park, and Enduimet Wildlife Management Area (Tanzania)

Non-Core AOO: Merrueshi Ranch, Taveta Area

Adjacent*: Kuku Group Ranch, Mailua Ranch, Tsavo West National Park



* Except for intel-related arrests, incidents that occurred in adjacent areas or in Tanzania are not reflected in this report.

WILDLIFE PROTECTION

Big Life strives to prevent the poaching of all wildlife within our area of operation. We track and apprehend poachers and collaborate with local prosecutors to ensure that they are punished to the fullest extent of the law. One of the largest employers of local Maasai in the ecosystem, Big Life's community rangers are expertly trained and well-equipped to tackle a variety of wildlife crimes.

Since our inception, poaching of all animals has dramatically declined in our area of operation.

Our **2019 Q3** activity is summarized below:

ANTI-POACHING

Big Life employs Maasai rangers from local communities who work collaboratively with a vast informer network and a number of tools to undertake a variety of anti-poaching activities.

Total Field Staff: 350+	Trained Rangers: 234
Ranger Units: 40	Tracker Dogs: 2
Mobile Ranger Units: 6	Permanent Outposts: 31
Aerial Surveillance Hours: 94.79 <i>(excluding Cessna 206 - Sept.)</i>	Rangers Trained: 63
Kilometers Patrolled This Quarter: On foot: 25,102 By vehicle: 63,494 Q3 TOTAL: 88,596 YTD TOTAL: 280,900	Total Kilometers Patrolled Since Inception (2011): On foot: 737,134 By vehicle: 2,075,579 TOTAL: 2,812,713

WILDLIFE CRIME & ANTI-TRAFFICKING

Following the arrest of suspects by Big Life rangers, our Prosecution Officer monitors court cases to ensure that maximum penalties are pursued. Meanwhile, Big Life's intelligence team remains actively involved in investigating wildlife trafficking, both in the immediate ecosystem and beyond.

SUSPECTS ARRESTED Poaching - Trophy Possession: 9 Poaching - Bushmeat: 17 Poaching - Fishing: 2	RECOVERED ITEMS Ivory: 103.5 kg + 3 pieces Animal Skins: 6 (crocodile 4, python 2) Snares: 133 Other: ammunition (50), bushmeat (526+ kg), guns (2), owl eggs (2), sandalwood (300 kg)
INCIDENTS Trophy Possession: 5 Bushmeat Poaching: 10 Poaching fish: 1	PROSECUTIONS Cases - Concluded: 3 (<i>one acquittal</i>) Cases - Ongoing: 310 suspects

MORTALITIES - ELEPHANT Human-Elephant Conflict: 0 Poaching: 0 Natural Causes: 0 Unknown: 0	MORTALITIES – OTHER (<i>excluding large predators</i>) Human-Wildlife Conflict: 0 Bushmeat Poaching: bushbuck (1), eland (7), gazelle (4), giraffe (2), monitor (1), hartebeest (3), wildebeest (1), zebra (3) Other (<i>human-related</i>): bat-eared fox (1), civet (1), gazelles (7), giraffe (4), ostrich (1)
INJURIES - ELEPHANT Elephants Injured: 4 Elephants Treated*: 1 <i>*Thanks to our partners at the Sheldrick Wildlife Trust and Kenya Wildlife Service.</i>	RESCUES/TREATMENTS - OTHER ANIMALS Impala (1)

RHINO INTENSIVE PROTECTION ZONE

There are **eight** known Eastern black rhinos in Big Life’s area of operation. They spend most of their time in the densely-forested Chyulu Hills National Park, protected by dedicated Big Life rangers and the Kenya Wildlife Service. In addition to monitoring and protecting the resident rhinos, Big Life has been working to improve and maintain infrastructure in the rhino area, the goal of which is to maintain Intensive Protection Zone (IPZ) status, which will allow for the future inbound translocation of rhinos from other territories.

Rhino Mortalities: 0	Rhino Snares Found: 0
Rhino Protection Rangers: 51	Dedicated Rhino Outposts: 7 Dedicated Rhino Units: 9
RHINO MONITORING Direct Sightings: 2 Indirect Sightings (<i>via camera trap</i>): 341 Spoor Sightings: 66	INFRASTRUCTURE Fencing: 40 km constructed by SWT Water Points: 3 maintained Camera traps: 41

NOTABLE UPDATES (click to read):

- Sergeant Mutinda Ndivo was recently selected as a [Paradise African Ranger Award winner](#).
- A popular elephant, Lobolo, was [successfully treated](#) for five spear wounds (*right*).
- Rangers conduct [search & rescue operations](#) to find missing children.
- [Zero rhinos have been poached](#) in the last four years.



HUMAN-WILDLIFE CONFLICT MITIGATION

Human-Wildlife Conflict (HWC) takes three primary forms across Big Life’s area of operation: crops raided by wildlife, particularly elephants; livestock killed by predators, such as lions; and humans injured or killed due to living in close proximity with wildlife.

Our **2019 Q3** activity is summarized below:

HUMAN-ELEPHANT CONFLICT MITIGATION

Poaching continues to pose a significant threat, but many elephants face an even bigger challenge: conflict with humans. As the human population increases, so do competing land uses, such as farming and cattle grazing. As humans compete for limited resources like water, land, and grass for livestock, we further encroach onto what were once wild lands. With less space to share, people and animals now come into direct contact at an alarming rate and often with deadly results.

Crop-Raiding Incidents: 67 Crop-Raiding Incidents Involving Elephants: 67	Acres Damaged: 44.25 Acres Damaged by Elephants: 44.25
Crop Raids Prevented by Big Life: 70	Elephant Retaliatory Hunts Attempted: 0
Crop-Protection Rangers: 24 Crop-Protection Fence Constructed to Date: 95 km Crop-Protection Fence Maintenance Workers: 28	Non-crop-raiding, elephant-related incidents: 8 <i>*including water tanks/pipes damaged by elephants, boma destruction, etc.</i>

PREDATOR PROTECTION

Big Life protects vulnerable predators in the ecosystem in collaboration with partners and local communities. The core component of Big Life’s predator protection program is livestock compensation, which reduces the motivation for retaliatory killing in response to livestock depredation.

The Predator Compensation Fund (PCF) pays Maasai livestock owners a portion of the value of their livestock lost to predators, on the condition that no predators are killed in retaliation. Big Life manages the PCF on Mbirikani Group Ranch, Eselengei Group Ranch, and the Kimana Conservancy. Given the success of this program, the goal is to continue expanding the PCF across the entire ecosystem.

The second part of Big Life’s predator protection program is the Maasai Olympics, which was established in 2012 as an alternative for the traditional killing of lions. At the Maasai Olympics, young warriors can compete for recognition, prove bravery, and attract girlfriends through a sports competition based on traditional warrior skills. The next games will occur in 2020.

Lion Mortalities: 1 - <i>HWC</i> Lion Mortalities in Violation of PCF: 1	Lion Retaliatory Hunts Prevented*: 1 <i>*In collaboration with our partners at Lion Guardians and Kenya Wildlife Service.</i>
Compensation Issued for: 65 Cows: \$9,849 904 Sheep/Goats: \$22,532 4 Donkey: \$185 Q3 TOTAL: \$32,566 YTD TOTAL: \$81,490	Livestock Killed by Predators: Cheetah: 135 Hyena: 560 Jackal: 156 Leopard: 34 Lion: 101 Wild dog: 3
Additional Predator Mortalities: Cheetah: 0 - <i>suspected HWC</i> Hyena: 3 - <i>HWC (1), euthanized (1), vehicle (1)</i> Jackal: 0 - <i>vehicle (0)</i>	Other: 0 incidents of problematic predators moved away from bomas to avoid depredation.

ADDITIONAL WILDLIFE CONFLICT

Humans Injured: 5	Wildlife Responsible for Injuries: elephant (3*), snake (1) <i>*injuries were indirect - result of falling while running away</i>
Humans Killed: 1	Wildlife Responsible for Deaths: bees (1)

NOTABLE UPDATES (click to read):

- And [interim soccer tournament](#) for the Maasai Olympics, a lion conservation program, was held.
- A lion was [killed in violation of PCF](#) on Eselengei. Now what?
- Success: there is currently a [pride of 22 lions](#) living entirely on Maasai community land.



SECURING WILDLIFE HABITAT

The human-wildlife conflict in the ecosystem is a direct result of wildlife and local communities competing for limited resources on the same shrinking land areas. In order to reduce conflict, wildlife habitat must be strategically protected, an increasingly urgent program focus for Big Life.

Our **2019 Q3** activity is summarized below:

CONSERVANCY DEVELOPMENT

Big Life's engagement in conservancy development is composed of two specific parts. The first is paying annual leases to hundreds of owners of 60-acre parcels of land located in the Kimana Corridor. These lease payments are intended to limit destructive development of the land, other than that which is compatible with conservation and pastoralism. The second involves working with local communities to protect land that is strategically important either as wildlife movement corridors or dispersal areas, but is also valuable to the local livestock economy as a grazing resource. This protection can be achieved through the establishment of conservancies, including the legal and management systems necessary for their effective functioning, and assisting to develop income-generating opportunities such as tourism.

Kimana Sanctuary, at the easternmost part of the Kimana Corridor, is an area frequented by Amboseli's biggest bull elephants, including known tuskers like Tim. Thanks to support from the Sheldrick Wildlife Trust and the D.N. Batten Foundation, Big Life rangers are working to [secure this special place](#).

NOTABLE UPDATES (click to read):

- Setting a fairy tale straight: [Kimana Sanctuary](#) was formally re-launched.



RANGELANDS MANAGEMENT

The Maasai are traditionally a pastoralist society, their wealth directly associated with their livestock. Large herds of cows, sheep, and goats graze across the ecosystem continually. Managing the impacts of grazing on the rangelands for the overall health of the ecosystem has become a major program focus.

Our **2019 Q3** activity is summarized below:

LAND

Big Life has helped to establish a sustainable farming program, in addition to helping develop a grazing plan to manage livestock movements and improve the condition of existing pasture. Rangers also actively protect the land by fighting against habitat destruction such as illegal logging or charcoaling. Lastly, we've partnered with local communities, partner NGOs, and local government to implement a [carbon credit program](#) in the Chyulu Hills to protect it from deforestation and overgrazing.

Suspects Arrested* for Habitat Destruction: 32 Habitat Destruction Arrest Incidents: 19 <i>*sometimes released depending on severity of crime</i>	Sustainable Farms: 2 Sustainable Farming Manager (1) & Apprentice (1)
Non-Arrest Habitat Destruction Incidents: 38	Incidents of community grazing and conservancy rules enforcement: 11

WATER

Water is one of the most precious resources in the African bush. Big Life rangers actively work to reduce illegal water extraction and ensure that river systems are free and flowing.

Total Rainfall (at HQ) This Quarter: 0 mm	Water-Related Incidents: 4
Liters of Fuel Provided for Pumping Water to Both Community and Wildlife (to reduce conflict): 262 L	Water Points Repaired: 3

NOTABLE UPDATES (click to read):

- Gucci has purchased 350,000 carbon credits from the [Chyulu Hills REDD+ project](#).
- [Mobile health clinics](#) have provided primary care services to 2,802 people in the last 18 months.
- An emergency scholarship spared one young girl a [premature marriage](#).

COMMUNITY

Winning the hearts and minds of the community and providing a mutual benefit through conservation is the only way to protect wildlife and wild lands far into the future. To that end, Big Life provides a number of services in support of the community generally, including education and healthcare initiatives, and also lesser-known activities, such as using ranger vehicles as ambulances, arresting criminals for community crimes (e.g., theft), conducting human and/or livestock search and rescue operations, and more.

Community Crime Incidents: 2	Suspects Arrested: 0
Human Search and Rescue Incidents: 3	Livestock Search Incidents: 2
Other Community Support Incidents: 2 (emergency hospital transport)	

EDUCATION

Big Life invests in the future of participating communities by funding teachers' salaries, providing scholarship funds for local students, and implementing conservation-specific curriculum in classrooms and communities.

Our **2019 Q3** activity is summarized below:

Teachers' Salaries Paid: 22* <i>*Great Plains Conservation took over the salaries for 12 teachers previously supported by Big Life</i>	Long-Term Student Scholarships Awarded: 262 Boys: 133 Girls: 129 One-Time Student Scholarships Awarded: 6
Tertiary-Level Graduates: 1* <i>*Bachelor of Arts in education</i>	Students Reached by Conservation Curriculum: 112 School Visits: 5 Amboseli National Park trips: 1

HEALTHCARE

Big Life works in partnership with the Kajiado South Sub-County Department of Health to implement mobile health clinics focused on primary healthcare and family planning. Additional services provided include immunization, antenatal check-ups and HIV testing and counseling.

Our **2019 Q3** activity is summarized below:

Mobile Health Clinics Conducted: 3	Patients Seen: 761 People Vaccinated: 63 People De-wormed: 1,209 Family Planning Provided: 315
Back-Pack Medical Outreaches: 12	People Vaccinated: 318 People De-wormed: 406 Family Planning Provided: 127

We are grateful for the support of our partners, including:

Field Partners

- 51 Degrees
- African Conservation Centre
- African Wildlife Foundation
- Amboseli Ecosystem Trust
- Amboseli Landowners Conservancy Association
- Amboseli Trust for Elephants
- Amboseli Tsavo Community Wildlife Ranger Association
- Association of Private Land Rhino Sanctuaries
- CHASE Africa
- Chyulu Hills Conservation Trust
- Conservation International
- Enduimet Wildlife Management Area
- European Union – European Regional Development Fund
- For Rangers
- Global Environment Facility
- Honeyguide Foundation
- International Fund for Animal Welfare (IFAW)
- Kajiado South Sub-County Department of Health
- Kenya Wildlife Service
- Kilimanjaro Community Conservation and Development Trust
- Kinetic Six
- Lead Ranger
- Lion Guardians
- Maasai Wilderness Conservation Trust (MWCT)
- Porini Eselengei Camp
- Ranger Campus
- Satao Elerai Safari Camp
- Save the Elephants
- Sheldrick Wildlife Trust
- Space for Giants
- The Thin Green Line Foundation
- Tusk Trust
- US Agency for International Development
- US Fish and Wildlife Service
- WildAid
- Wildlife Conservation Network
- WildlifeDirect
- Zoological Society of London

CORPORATE PARTNERS

- 1% for the Planet
- Electric Forest
- Elephant Gin
- Great Plains Conservation
- LUSH Fresh Handmade Cosmetics
- Quagga Green Label

ZOO PARTNERS

- Beauval Nature
- Chester Zoo
- Oakland Zoo
- Ouwehand Zoo Foundation
- Stichting Vrienden Safaripark
- Zoo Basel

Together we can save wildlife and wild lands - now and for future generations. Please consider making a life-saving [donation](#) to support the critical programs mentioned in this report. Thank you for your support.